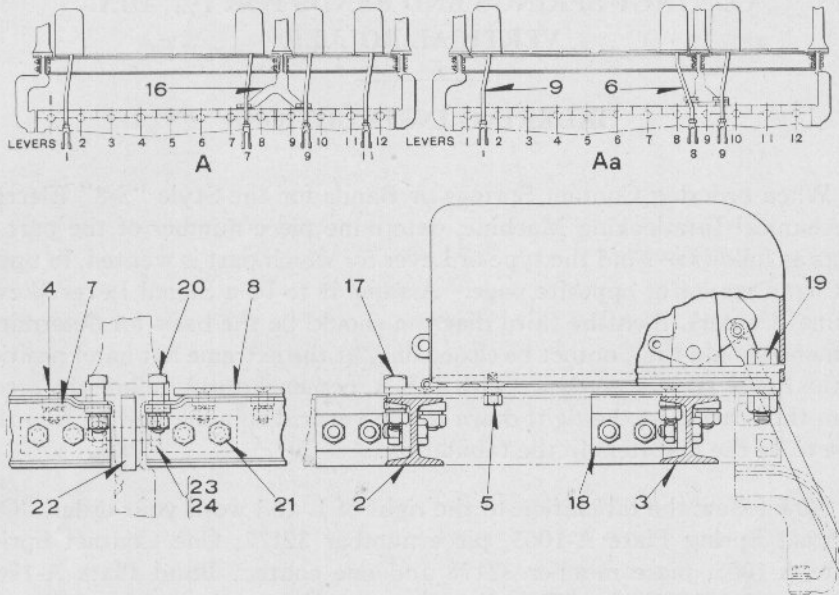


PLATE A-1070

UNION SWITCH & SIGNAL CO.

**MECHANICAL TIME LOCKS, FORCED DROP ELECTRIC LOCKS AND
UNION AND MODEL 12 ELECTRIC LOCKS APPLIED TO
STYLE "S-8" MACHINE**



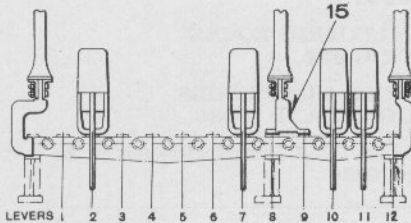
A Note:—Model 12 Electric Locks may be applied to any lever of any Lever Section, but only seven Locks can be applied to any Eight Lever Section, and only Three Locks can be applied to any Four Lever Section, when operation Rods from "S-8" units are connected to Drivers between Bars 22 and 23.

On Machines having Locking beds less than 24 Bars, Locks may be applied to any Lever only when there is no "S-8" unit on that lever. Two Locks may be mounted adjacent to each other only when there are no "S-8" Units on the same Lever.

Aa Note:—Model 12 Electric Lock may be applied to last lever of any section, when Front Intermediate Support Ref. 15 is used in place of Ref. 16.

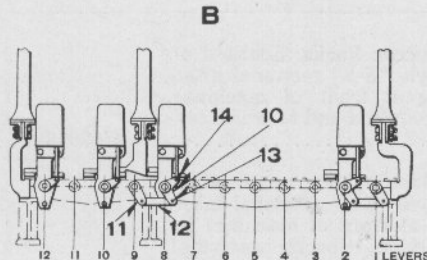
UNION SWITCH & SIGNAL CO.

MECHANICAL TIME LOCKS, FORCED DROP ELECTRIC LOCKS AND
UNION AND MODEL 12 ELECTRIC LOCKS APPLIED TO
STYLE "S-8" MACHINE



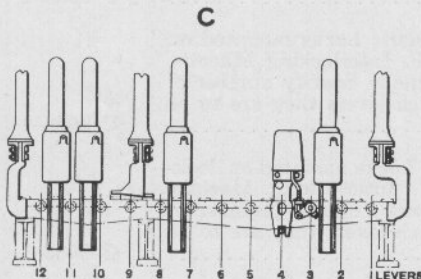
B Note:—Model 12 Locks may be applied to any Lever except the first and last Lever of any eight or four Lever section, where operating rods from "S-8" Units connect to drivers between bars 22 and 23.

On machines having less than 24 bars two Locks may be mounted adjacent to each other only when there are no "S-8" Units on the same Levers.



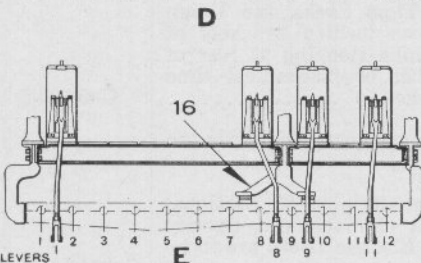
C Note:—Union Electric Locks may be applied directly to any Lever except the First Lever of any eight or four Lever section, and may be applied to these Levers through Link connections as shown.

On Machines having locking bed 16 bars or less, Lock may be applied on last Lever of any section only when there is no "S-8" Unit on that Lever. Two Locks may be mounted adjacent to each other only when there are no "S-8" Units on the same Lever.



D Note:—Time Locks may be applied to any Lever except the first two Levers of any eight or four Lever section.

On Machines having locking beds less than 12 bars, two Locks may be mounted adjacent only when there are no "S-8" Units on the same Lever.



E Note:—Forced Drop Electric Locks may be applied to any lever of any Section, but only Seven Locks can be applied to any Eight Lever Section, and only Three locks can be applied to any Four Lever Section, when Operating Rods from "S-8" Units are connected to Drivers between Bars 22 and 23.

On Machines having Locking Beds less than 24 Bars, Locks may be applied to any Lever only when there is no "S-8" Unit on that Lever. Two Locks may be mounted adjacent to each other only when there are no "S-8" Units on the same Lever.

PLATE A-1070

UNION SWITCH & SIGNAL CO.

**MECHANICAL TIME LOCKS AND UNION AND MODEL 12 ELECTRIC
LOCKS APPLIED TO STYLE "S-8" ELECTRO-MECHANICAL
INTERLOCKING MACHINES**

FOR DETAILS OF MODEL 12 ELECTRIC LOCKS REFER
TO PLATE G-222

FOR DETAILS OF UNION ELECTRIC LOCKS
REFER TO PLATE G-218

FOR DETAILS OF MECHANICAL TIME LOCKS
REFER TO PLATES G-226, G-227 AND G-236

Order by Plate, Piece, Reference and Abbreviated Description Given in
Heavy Face Type Only

Piece	Ref.	Description	Drawing Reference
	A*	Application of Model 12 Electric Locks mounted on "I" Beam supports of Style "S-8" sectional interlocking machine (looking at front of machine). Specify numbers of locks required and to which levers they are to be applied	C-9033-1
	Aa*	Application of Model 12 Electric Lock mounted on "I" Beam supports of Style "S-8" sectional interlocking machine (looking at front of machine) for locking last lever of any section. Specify number of locks required and to which levers they are to be applied	C-9033-1
	B*	Application of Model 12 Electric Locks mounted on locking brackets of S. & F. Interlocking Machine (looking at front of machine). Specify number of locks required and to which levers they are to be applied	C-9033-1
	C*	Application of Union Electric Locks mounted on locking brackets of S. & F. Interlocking Machine (looking at rear of machine). Specify number of locks required and to which levers they are to be applied	C-9033-1
	D*	Application of Mechanical Time Locks and Union Electric Locks mounted on locking brackets of S. & F. Interlocking Machine (looking at rear of machine). Specify number of mechanical time locks and union electric locks.	C-9033-2
		*NOTE—For Possible Arrangements see Notes on opposite page.	
2		Front "I" Beam for 4-Lever Style "S-8" Sectional Machine (looking at front of machine). Specify to which levers Model 12 Electric Locks are to be applied	C-8577-245

UNION SWITCH & SIGNAL CO.

MECHANICAL TIME LOCKS AND UNION AND MODEL 12 ELECTRIC
LOCKS APPLIED TO STYLE "S-8" ELECTRO-MECHANICAL
INTERLOCKING MACHINES
(Continued)

FOR DETAILS OF MODEL 12 ELECTRIC LOCKS REFER
TO PLATE G-222

FOR DETAILS OF UNION ELECTRIC LOCKS
REFER TO PLATE G-218

FOR DETAILS OF MECHANICAL TIME LOCKS
REFER TO PLATES G-226, G-227 AND G-236

Order by Plate, Piece, Reference and Abbreviated Description Given in
Heavy Face Type Only

Piece	Ref.	Description	Drawing Reference
	2a	Front "I" Beam for 8-lever Style "S-8" Sectional Machine (looking at front of machine). Specify to which levers Model 12 Electric Locks are to be applied.....	C-8577-245
	3	Rear "I" Beam for 4-Lever Style "S-8" Sectional Machine (looking at front of machine). Specify to which levers Model 12 Electric Locks are to be applied.....	C-8577-245
	3a	Rear "I" Beam for 8-Lever Style "S-8" Sectional Machine (looking at front of machine). Specify to which levers Model 12 Electric Locks are to be applied.....	C-8577-245
	4	Machine Screw, $\frac{3}{8}$ "-16x1 $\frac{3}{8}$ " Flat Hd. S. with Hex. Nut, Lock Washer and Washer Ref. 7.	
	5	Tap Bolt, $\frac{3}{8}$ "-16x1 $\frac{1}{4}$ " Hex. Hd. S. with $\frac{3}{8}$ " Lock Washer.	
158294	6	Operating Rod for Ref. A.....	B-10394-10
41387	7	Washer for Ref. 4.....	8065-165
158297	8	Supporting Plate for Model 12 Electric Lock for Ref. A.....	C-8577-248
158296	9	Operating Rod, complete for Ref. A (Without Pins and Cotters).....	B-10394-10
6533	9a	Pin, $\frac{3}{8}$ "x1 $\frac{7}{16}$ " with two $\frac{1}{8}$ "x $\frac{3}{4}$ " Cotters for Ref. 9....	B-10209-1

Zachary C. Gillihan 2008

PLATE A-1070

UNION SWITCH & SIGNAL CO.

MECHANICAL TIME LOCKS AND UNION AND MODEL 12 ELECTRIC LOCKS APPLIED TO STYLE "S-8" ELECTRO-MECHANICAL INTERLOCKING MACHINES (Continued)

FOR DETAILS OF MODEL 12 ELECTRIC LOCKS REFER
TO PLATE G-222

FOR DETAILS OF UNION ELECTRIC LOCKS
REFER TO PLATE G-218

FOR DETAILS OF MECHANICAL TIME LOCKS
REFER TO PLATES G-226, G-227 AND G-236

Order by Plate, Piece, Reference and Abbreviated Description Given in
Heavy Face Type Only

Piece	Ref.	Description	Drawing Reference
142072	9b	Pin, $\frac{1}{2}$ "x $1\frac{3}{4}$ " with one $\frac{3}{16}$ "x1" Cotter for Ref. 9.....	8058-211
117917	10	Crank for Ref. C.....	8192-317
118049	11	Arm for Ref. C.....	8192-318
117915	12	Link for one space for Ref. C.....	12464-3
117916	12a	Link for two spaces for Ref. C.....	12464-3
30304	13	Pin, $\frac{1}{2}$ "x $1\frac{3}{16}$ " with $\frac{1}{8}$ "x $\frac{3}{4}$ " Cotter for Refs. 10 and 11	B-10214-1
195	14	Pin, $\frac{1}{2}$ "x $1\frac{11}{16}$ " with $\frac{1}{8}$ "x $\frac{3}{4}$ " Cotter for Ref. 10.....	B-10214-1
127544	15	Front Intermediate Support. (Used when Model 12 Electric Lock is applied to Second Locking Bracket to the Left of Style "S-8" Machine Leg).....	C-8577-215
65061	15a	Rear Intermediate Support. (Used when Model 12 Electric Lock is applied to Second Locking Bracket to the Left of Style "S-8" Machine Leg).....	C-8577-32
111150	16	Front Intermediate Support.....	C-8577-54
65061	16a	Rear Intermediate Support.....	C-8577-32
	17	Machine Bolt, $\frac{3}{8}$ "-16x $1\frac{1}{2}$ " Sq. Hd. S. with $\frac{3}{8}$ " Hex. Nut, Washer Ref. 7 and $\frac{3}{8}$ " Plain S. Lock Washer ($\frac{5}{32}$ "x $\frac{3}{32}$ ").	
153835	18	Bracket.....	10974-150
	19	Machine Bolt, $\frac{5}{8}$ "-11x $2\frac{1}{2}$ " Hex. Hd. S. with $\frac{5}{8}$ " Hex. Nut and $\frac{5}{8}$ " Plain S. Lock Washer.	

UNION SWITCH & SIGNAL CO.

MECHANICAL TIME LOCKS AND UNION AND MODEL 12 ELECTRIC
LOCKS APPLIED TO STYLE "S-8" ELECTRO-MECHANICAL
INTERLOCKING MACHINES
(Continued)

FOR DETAILS OF MODEL 12 ELECTRIC LOCKS REFER
TO PLATE G-222

FOR DETAILS OF UNION ELECTRIC LOCKS
REFER TO PLATE G-218

FOR DETAILS OF MECHANICAL TIME LOCKS
REFER TO PLATES G-226, G-227 AND G-236

Order by Plate, Piece, Reference and Abbreviated Description Given in
Heavy Face Type Only

Piece	Ref.	Description	Drawing Reference
41885	20	Machine Bolt, 1/2"-13x2" Sq. Hd. S. with 1/2" Hex. Nut, Washer Ref. 20a and 1/2" Plain S. Lock Washer (3/16"x3/32").	8065-166
	20a	Washer for Ref. 20.....	
153836	21	Machine Bolt, 1/2"-13x1 1/4" Hex. Hd. S. with 1/2" Hex. Nut and 1/2" Plain S. Lock Washer.	9999-622
	22	Filler.....	
	23	Machine Bolt, 1/2"-13x2 1/2" Hex. Hd. S. with 1/2" Hex. Nut and 1/2" Plain S. Lock Washer (3/16"x3/32") at Joint of Machine.	
	24	Machine Bolt, 1/2"-13x2 1/8" Hex. Hd. S. with 1/2" Hex. Nut and 1/2" Plain S. Lock Washer (3/16"x3/32") at End of Machine.	